

# JTAG MPC55xx User Manual



## Indice – Index

Premessa / Premise . . . . .	3	
Il modulo EOBD2 / The EOBD2 module . . . . .	4	
Flat colorato per la lettura / Colored flat for reading . . . . .	5	
Esempio di collegamento JTAG / Example of JTAG connection . . . . .	6	
Marelli MJD 8F2 / 8DF / 8DS . . . . . MPC5565 . . . . . FIAT Diesel . . . . .	7	
Marelli MULTIAIR 8GMF.A5 . . . . . MPC5565 . . . . . FIAT Benzina . . . . .	8	
Marelli MULTIAIR 8GMF.01 . . . . . SPC5553 . . . . . FIAT Benzina . . . . .	9	
Marelli 7GF . . . . . MPC5554 . . . . . FIAT . . . . .	10	
Delphi CRD 2.61 PIEZOTEC . . . . . MPC5566 . . . . . MB . . . . .	12	
Delphi CRD 2.10 SOLENOID . . . . . MPC5566 . . . . . MB . . . . .	13	
Delphi DCM3.5 . . . . . MPC5566 . . . . . PSA/FORD . . . . .	15	
Delphi PCX2 . . . . . MPC5565 . . . . . DAF PACCAR . . . . .	16	
TRW EMS2 . . . . . MPC5554 . . . . . VOLVO . . . . .	18	
Motorola NCG4 . . . . . MPC55xx . . . . . CHRYSLER/DODGE/JEEP . . . . .	20	
Motorola NCG5 . . . . . MPC55xx . . . . . CHRYSLER/DODGE/JEEP . . . . .	21	
Continental CM2150E . . . . . MPC55xx . . . . . DAF TRUCK - KING LONG . . . . .	22	
Versione del manuale / Manual version . . . . .	24	



**IMPORTANTE – *IMPORTANT***

Il collegamento tra l'interfaccia EOBD e le ECU è molto semplice, tuttavia noi consigliamo di seguire attentamente questo manuale perché ogni piccolo errore può danneggiare la centralina.

*The connection between the EOBD interface and the ECU is very simple, but we recommend to follow this manual attentively because each small error could damage the ECU.*

Come prima cosa è indispensabile installare nel vostro computer il software, seguendo le istruzioni, presente nel CD di installazione.

*As before thing is what is necessary install the software in your computer, following the instructions, present in the CD of installation.*

**Attenzione:**

Alimentare l'interfaccia utilizzando un alimentatore a 12V, indifferente dal tipo di centralina che si deve leggere. Il led rosso si accenderà.

**Attention:**

It's essential that the interface has fed using a feeder to 12V **always**, without note of from the type of ECU that must be read. The red led will light.

Connettere il cavo con connettore DB15 alla porta DB15 dell'interfaccia EOBD 2.  
Figura 2.

*Connect the cable with connector DB15 to the DB15 door of EOBD 2 interface.  
Figure 2*

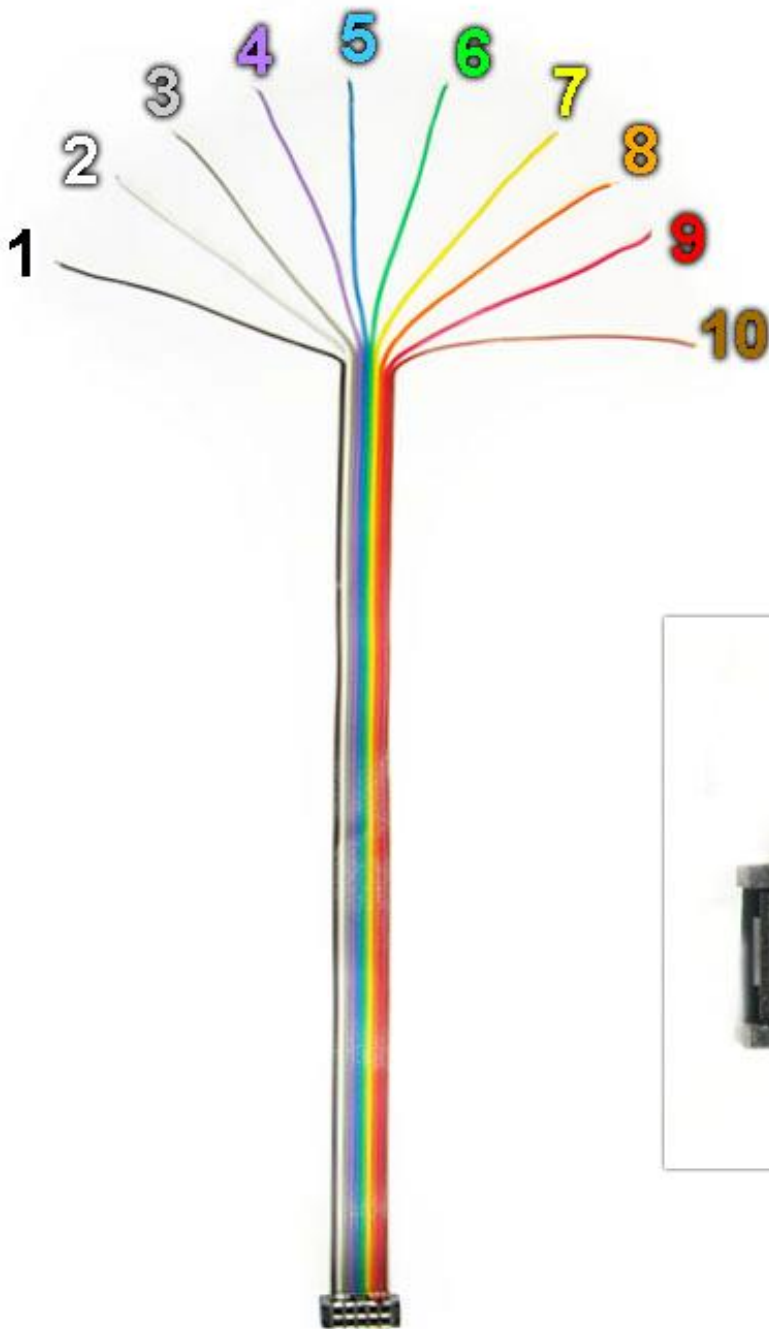


Figura 1: Il led rosso è acceso  
*The red led is light*

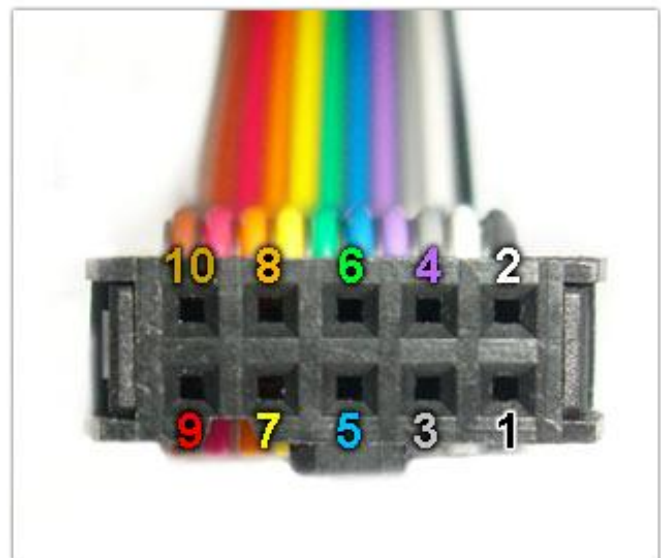


Figura 2: Cavo DB15 connesso all'interfaccia  
*cable DB15 connect to the interface*

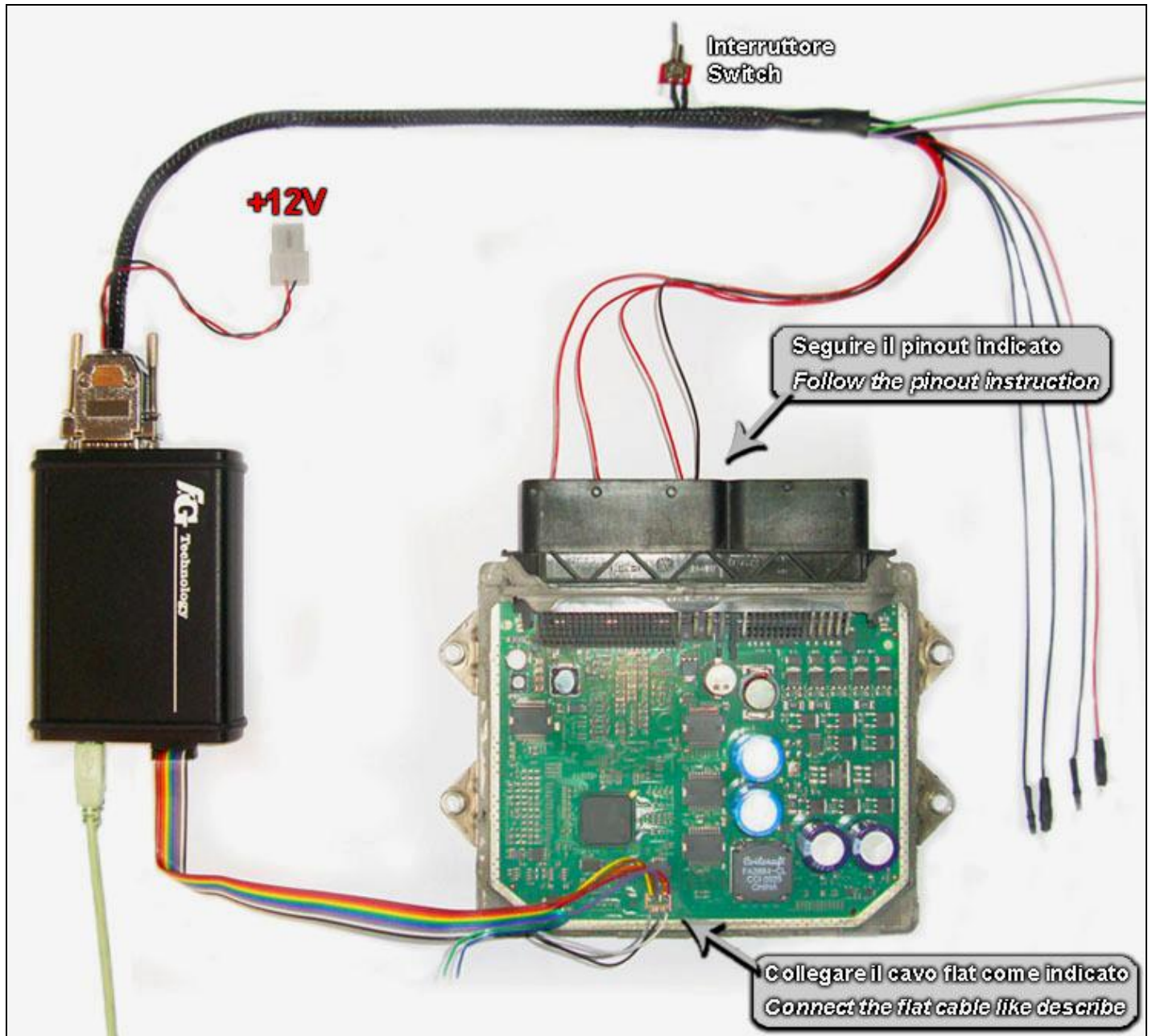
Flat colorato per la lettura – Colored flat for the reading



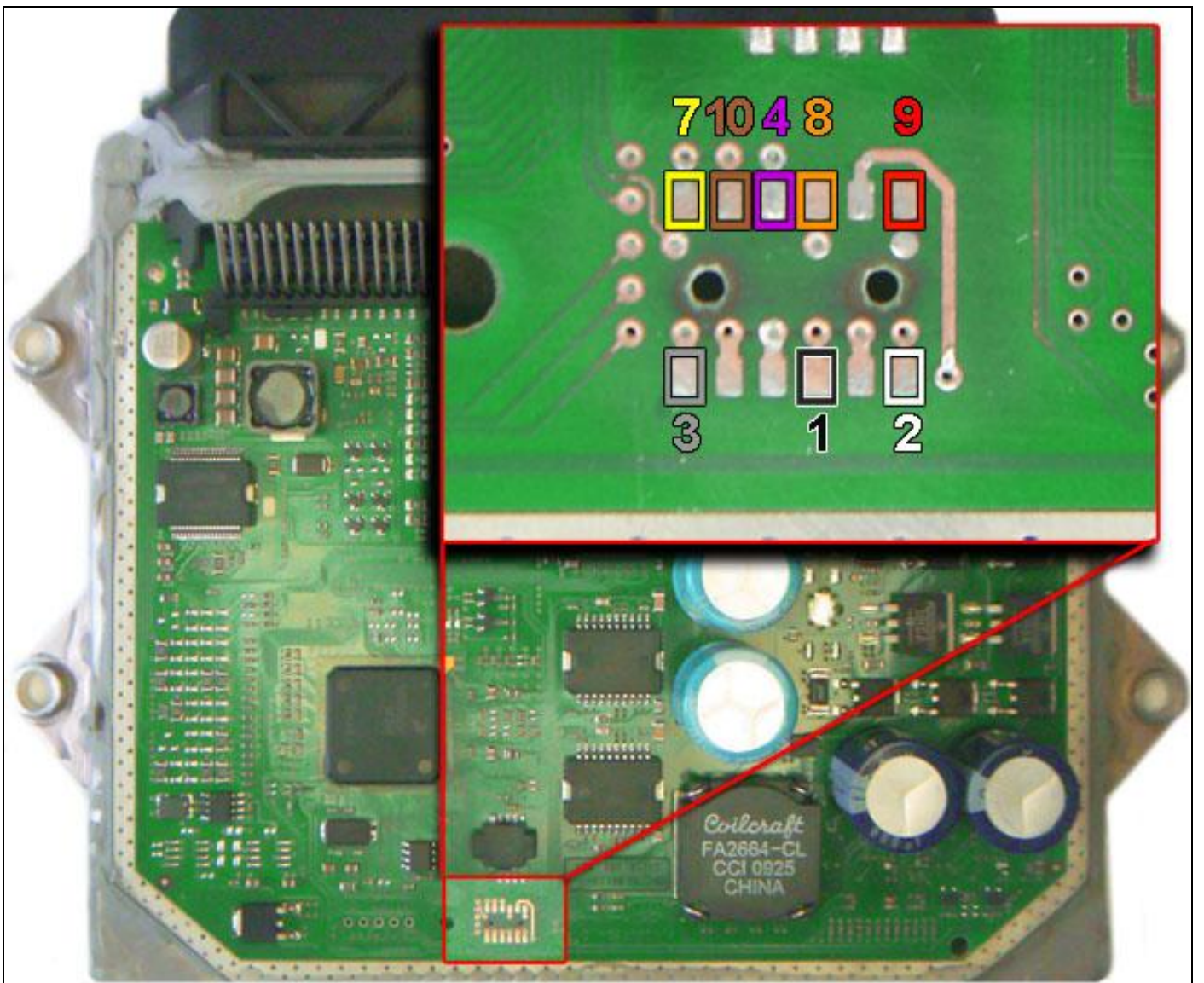
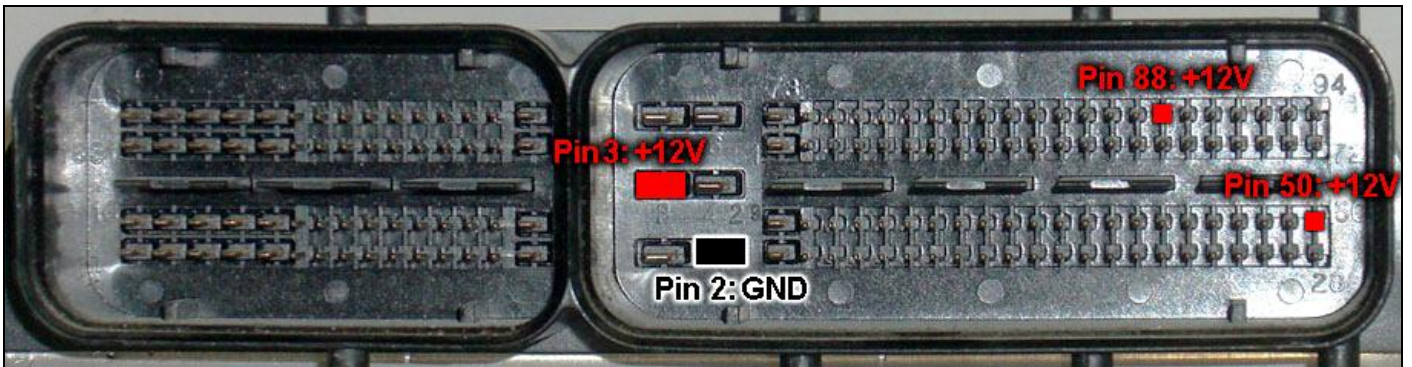
1	NERO	BLACK
2	BIANCO	WHITE
3	GRIGIO	GREY
4	VIOLA	VIOLET
5	BLU	BLUE
6	VERDE	GREEN
7	GIALLO	YELLOW
8	ARANCIONE	ORANGE
9	ROSSO	RED
10	MARRONE	BROWN

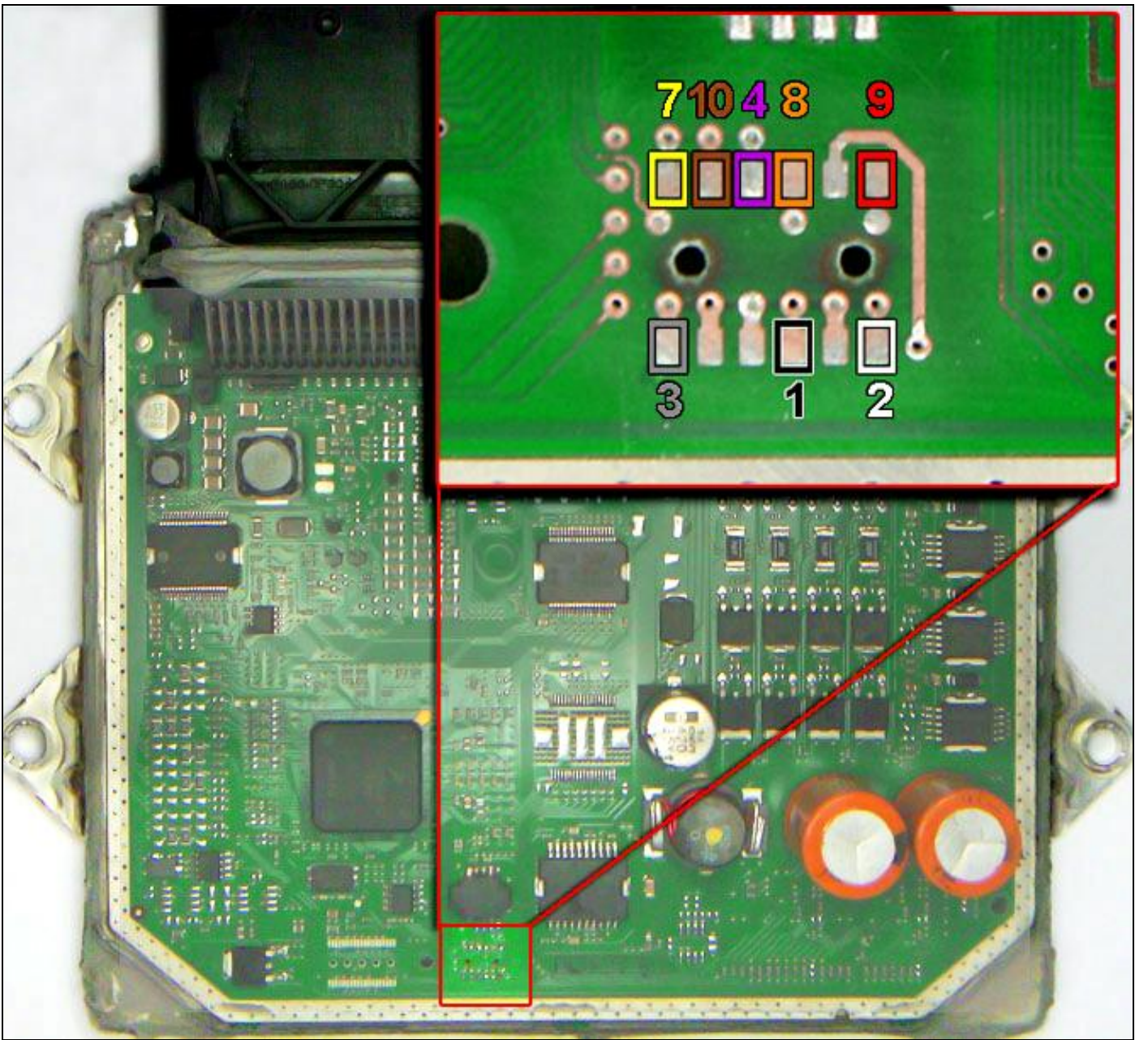
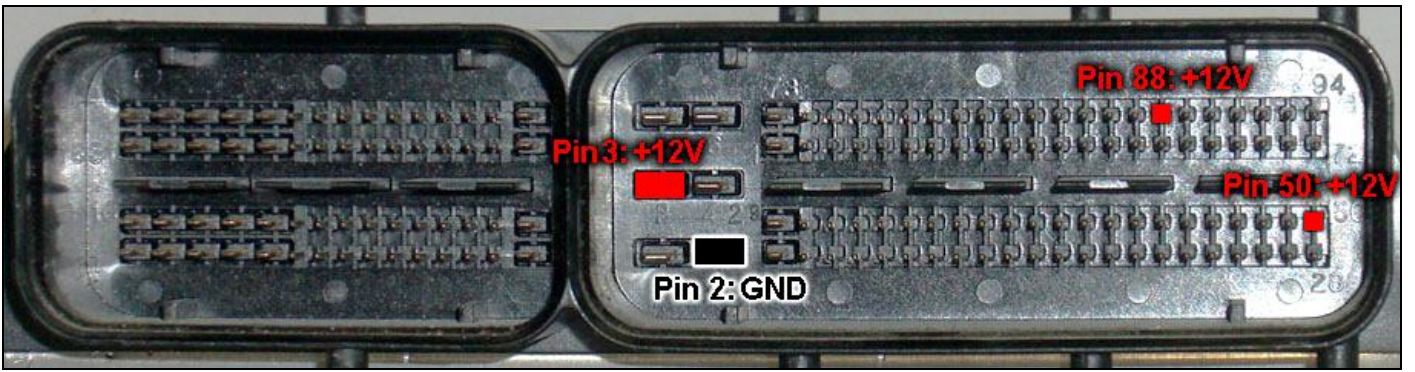


Esempio di collegamento JTAG – Example of JTAG connection

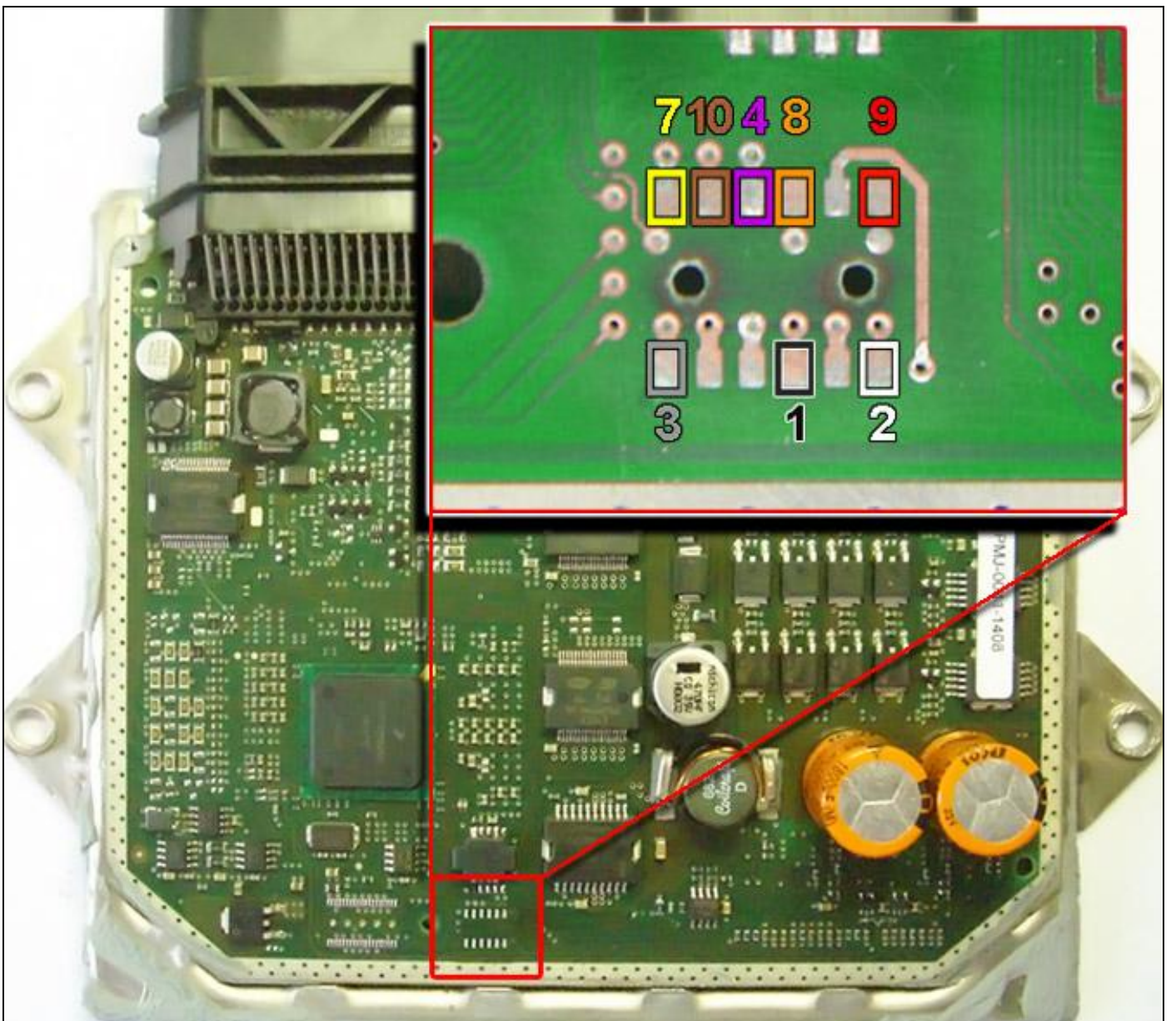
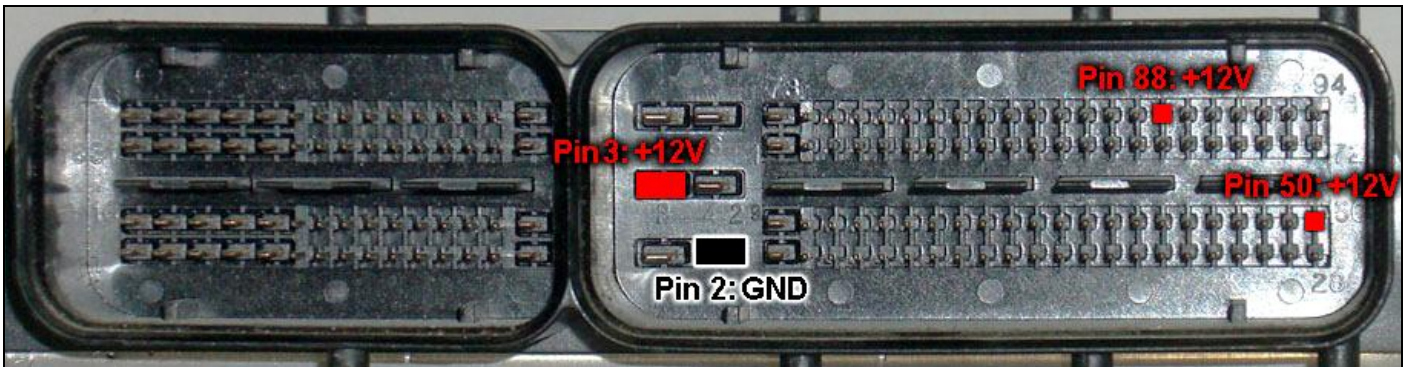


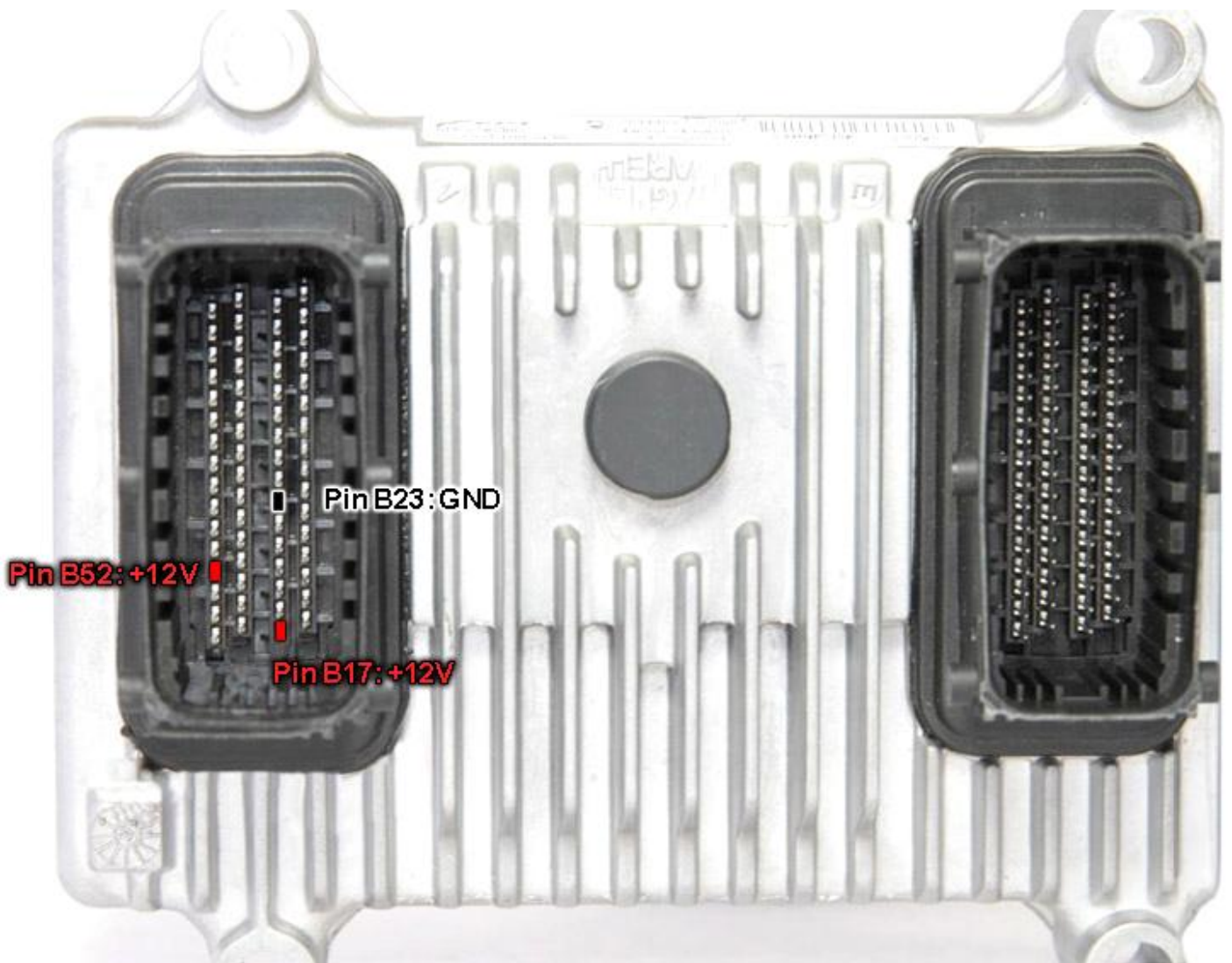
Marelli MJD 8F2 / 8DF / 8DS – MPC5565 - FIAT DIESEL

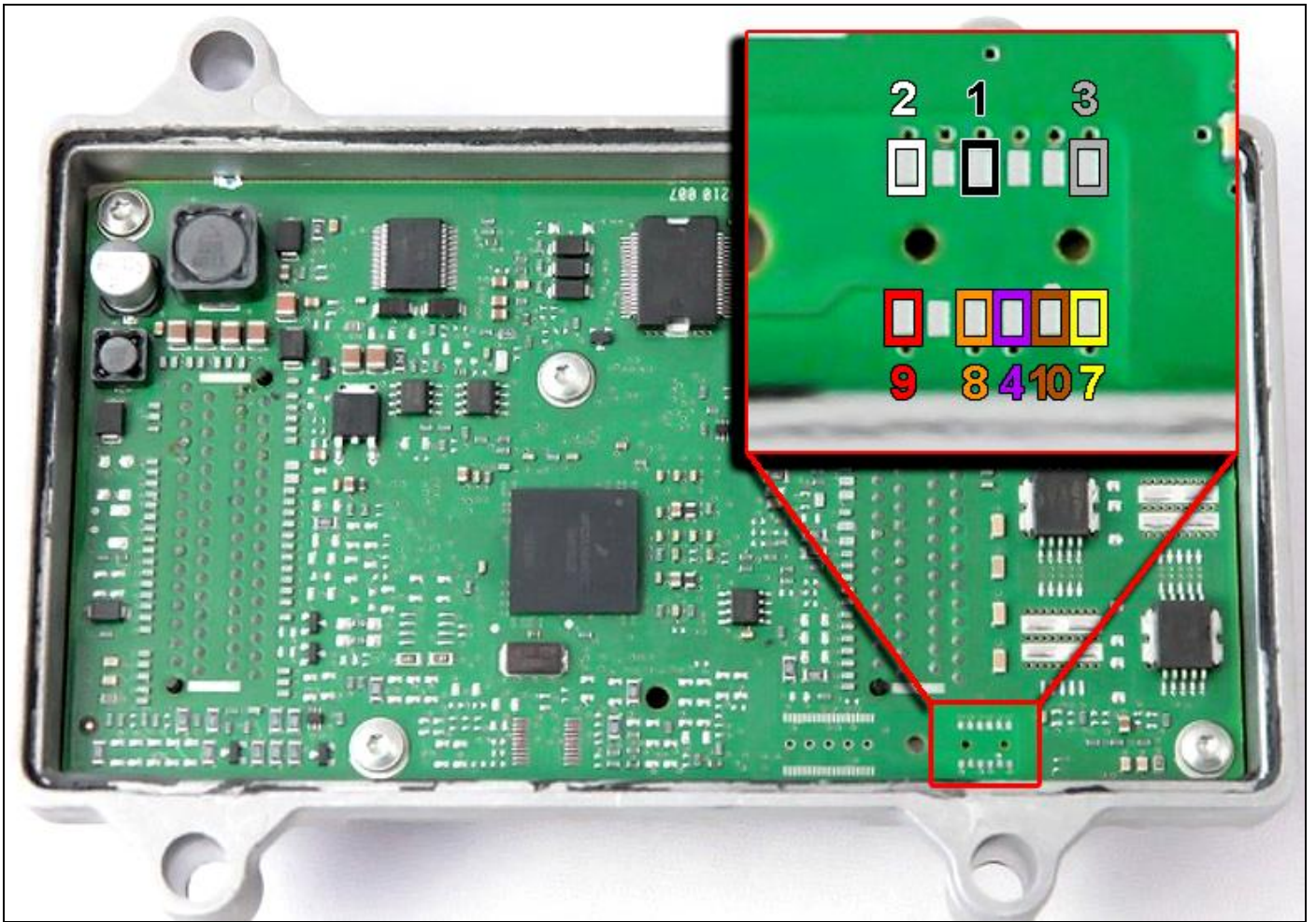




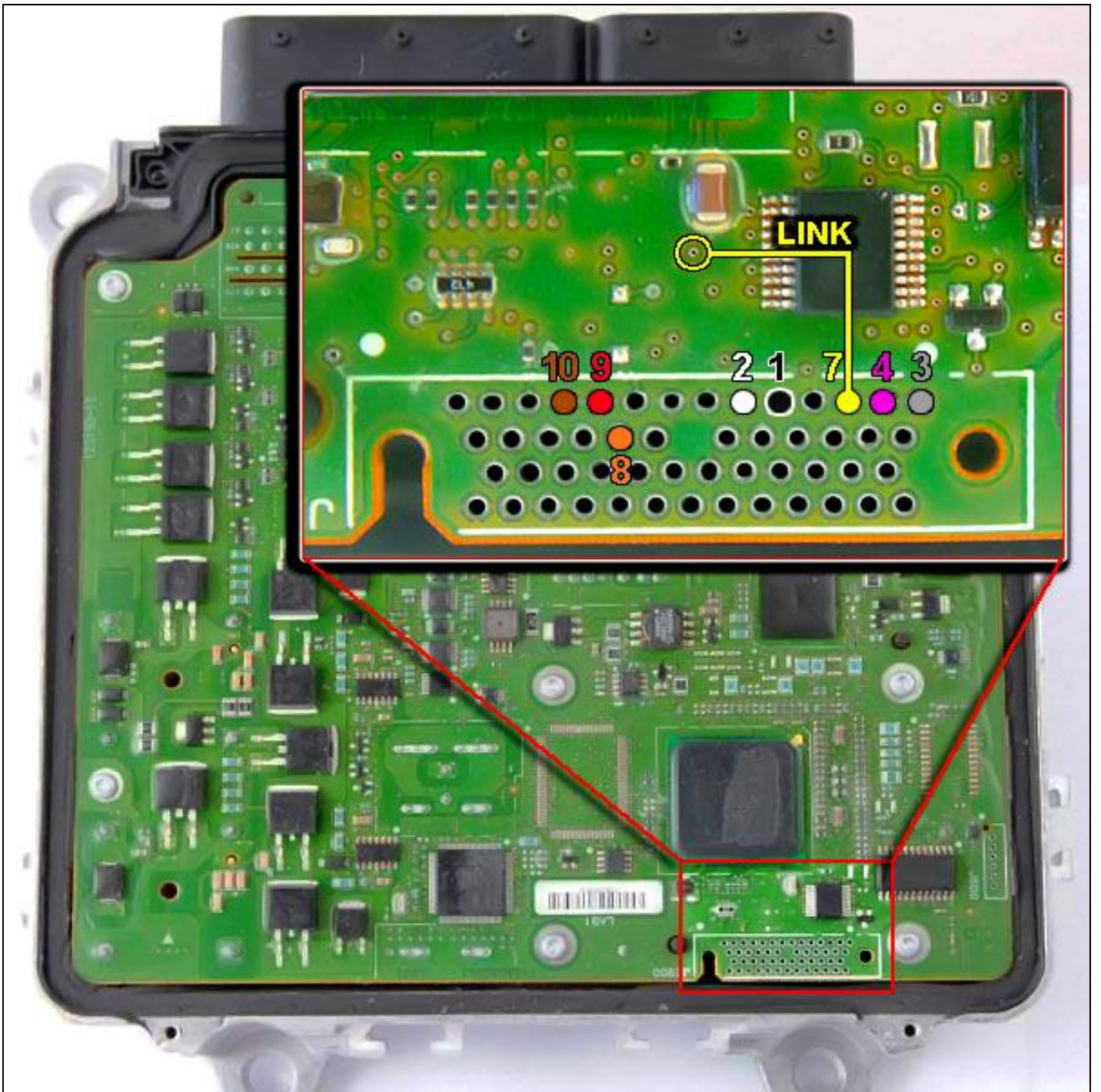








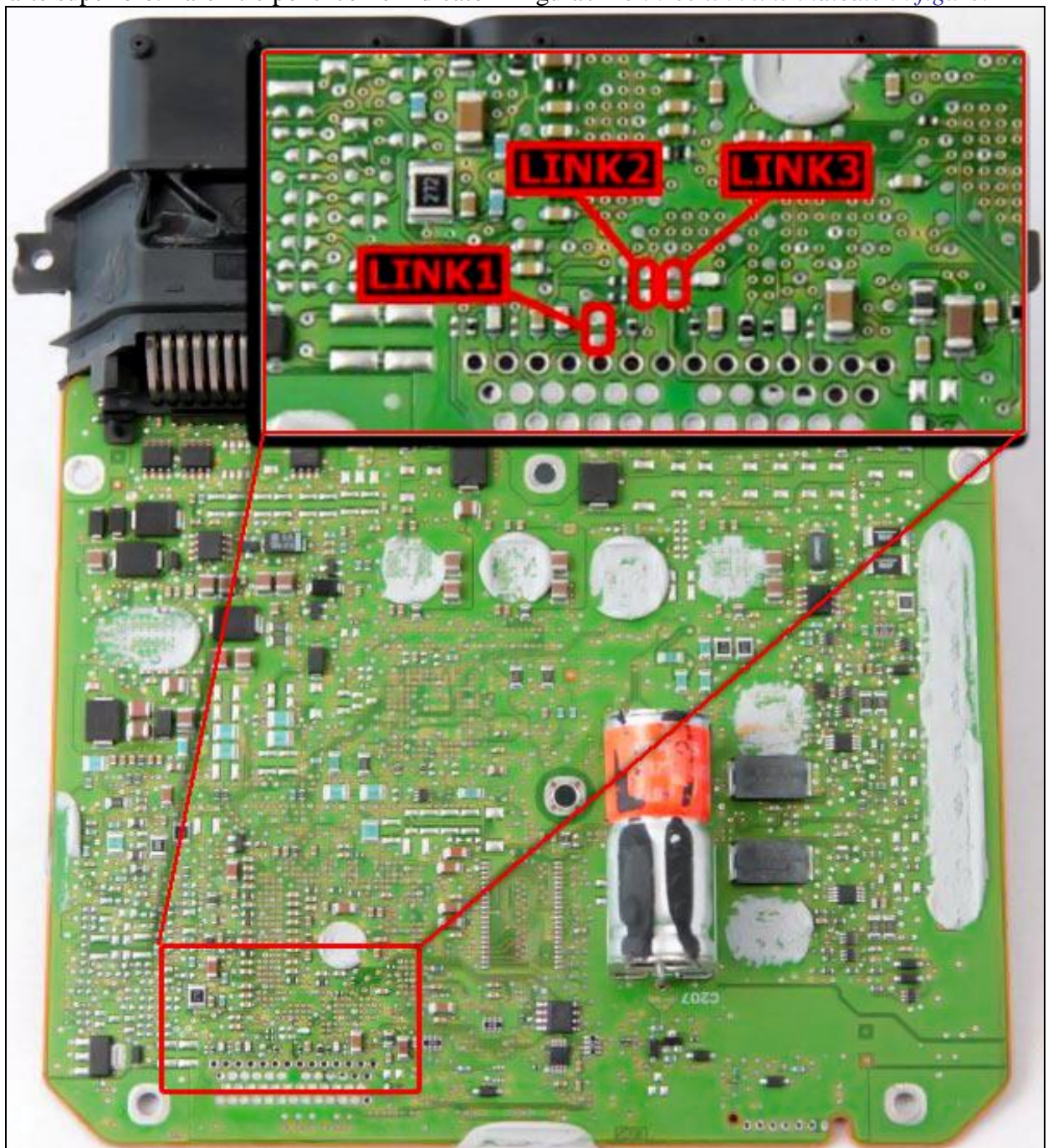
DELPHI CRD 2.61 PIEZOTEC – MPC5566 – MB



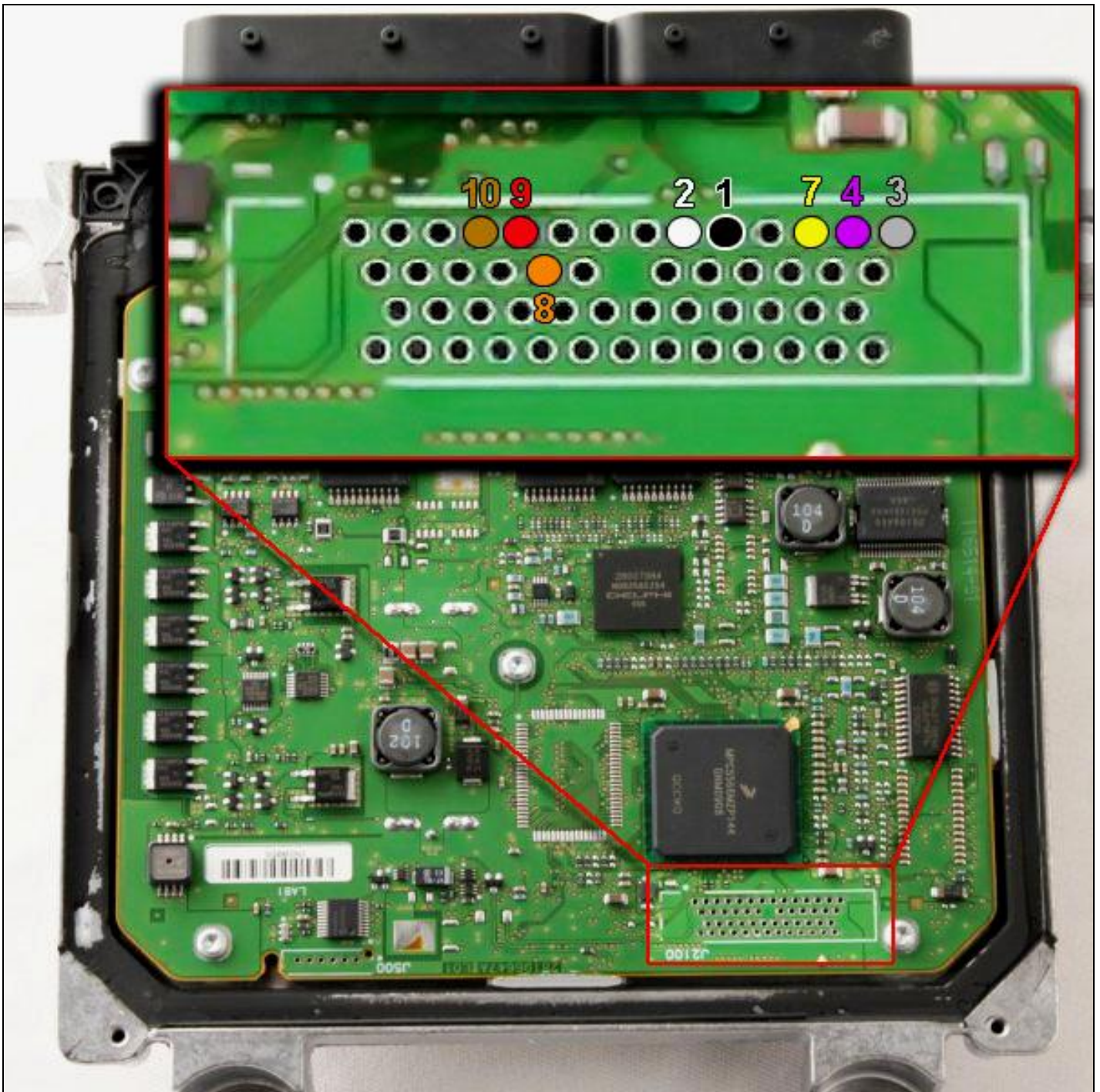
DELPHI CRD 2.10 SOLENOID – MPC5566 – MB

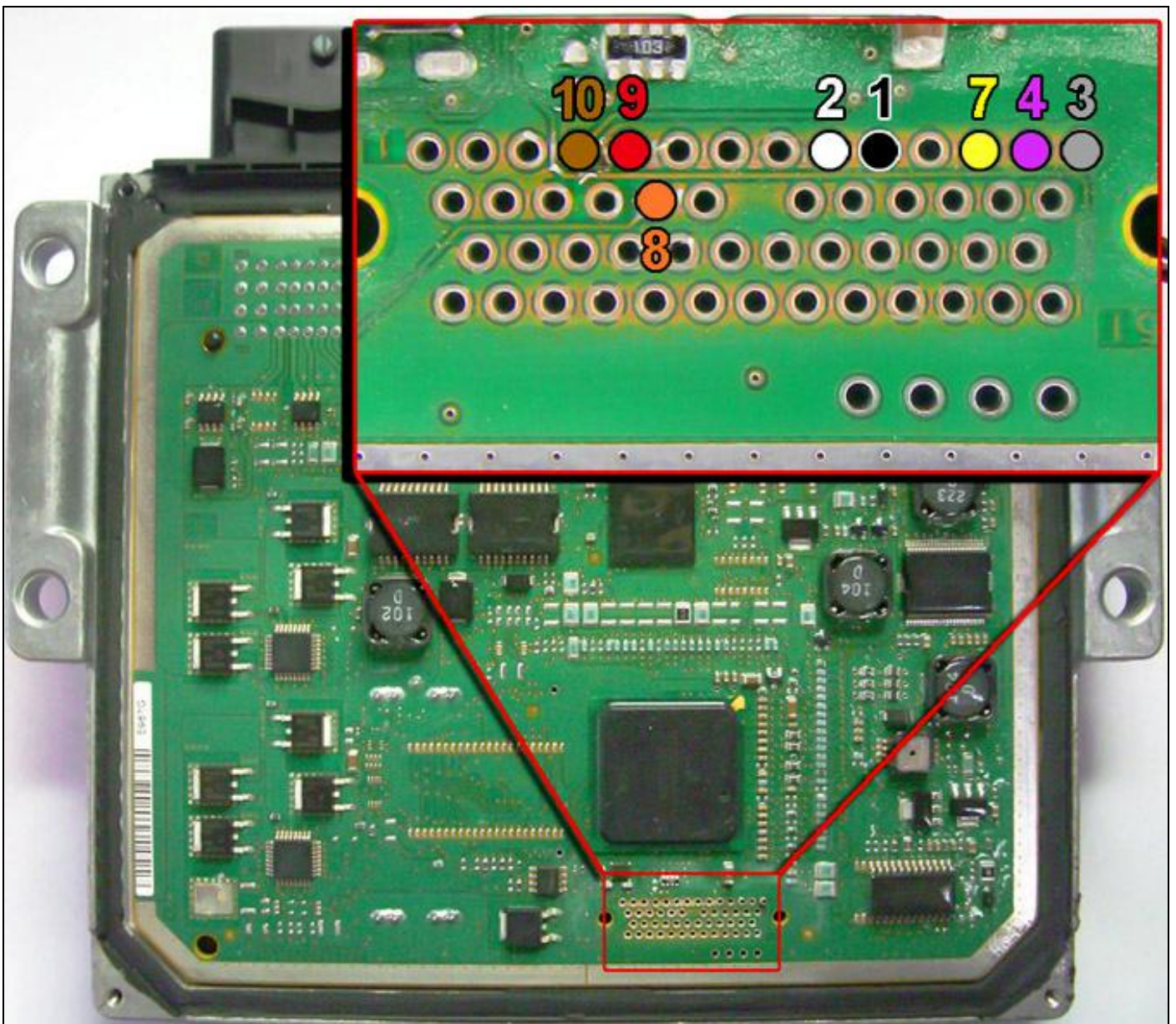


1/2 – Parte superiore: Fare i tre ponti come indicato in figura / Do three link like indicate in figure:



2/2 – Parte inferiore: Connettere il cavo flat colorato / *Connect the flat colorated cable:*





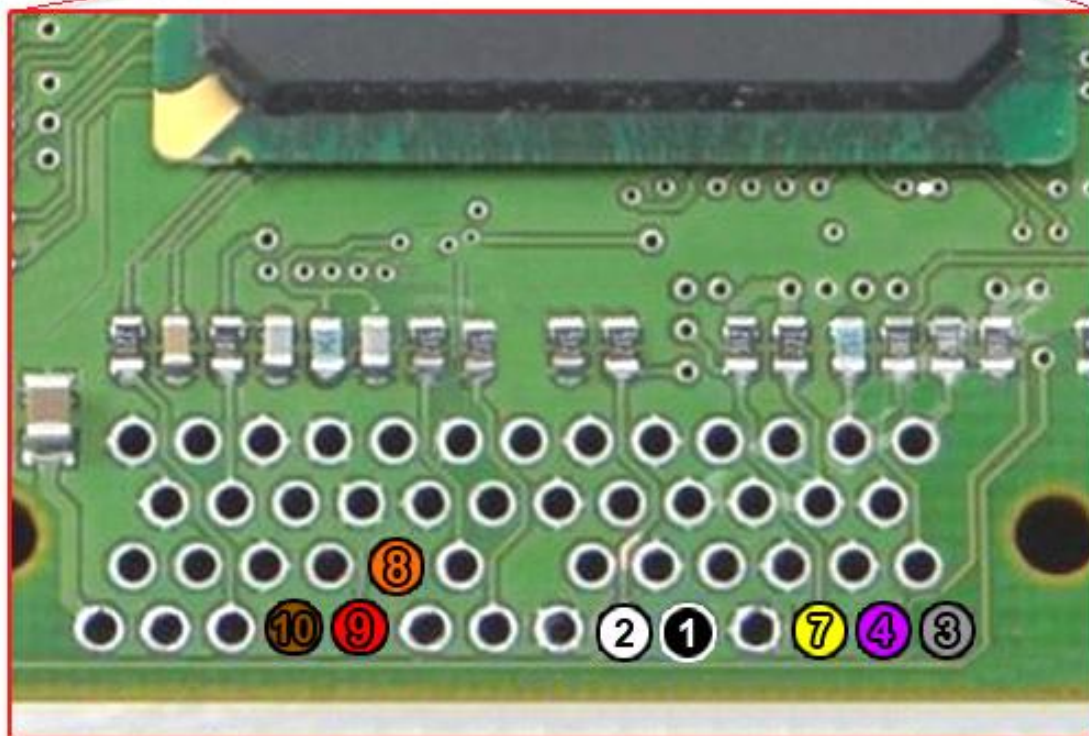
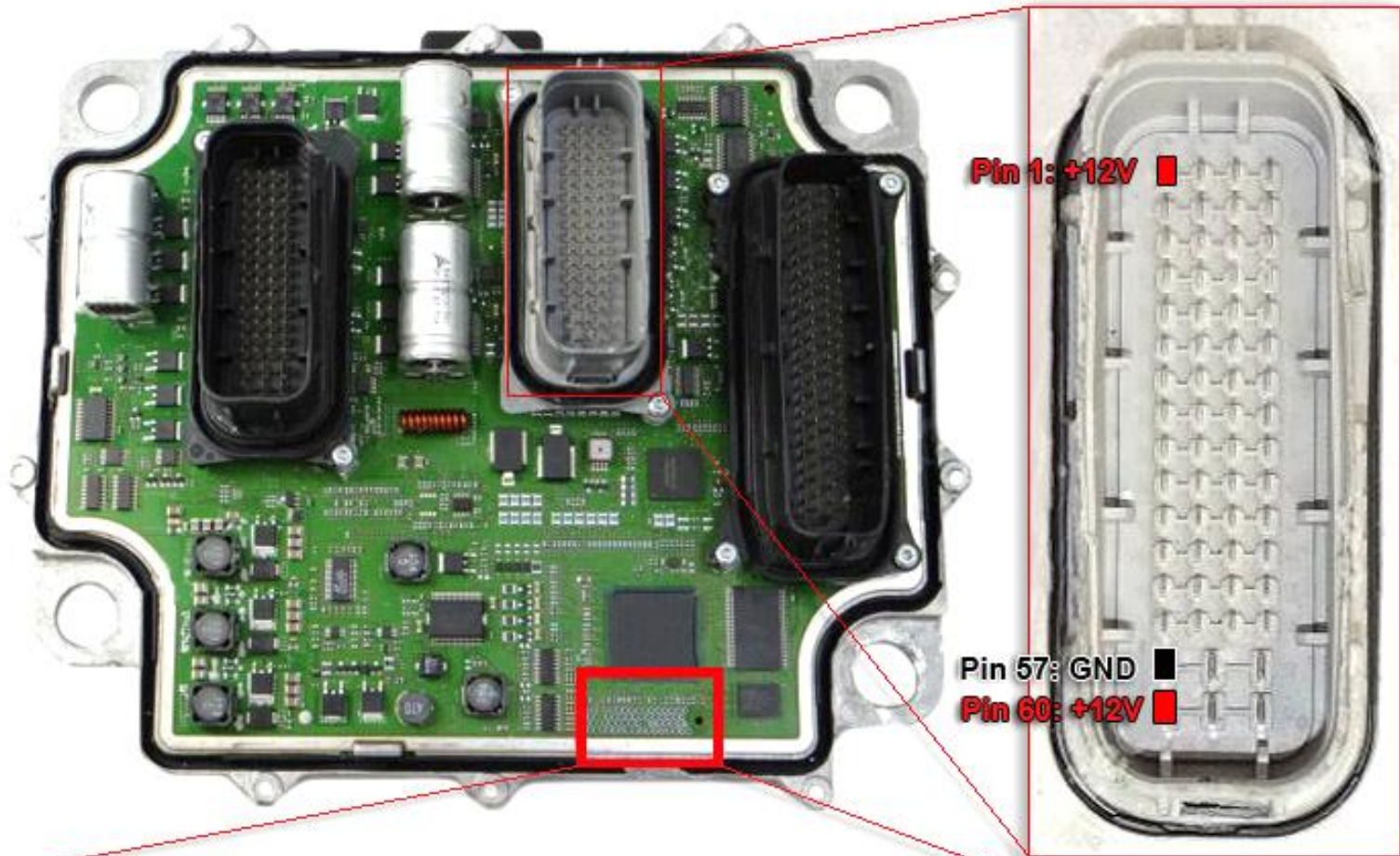


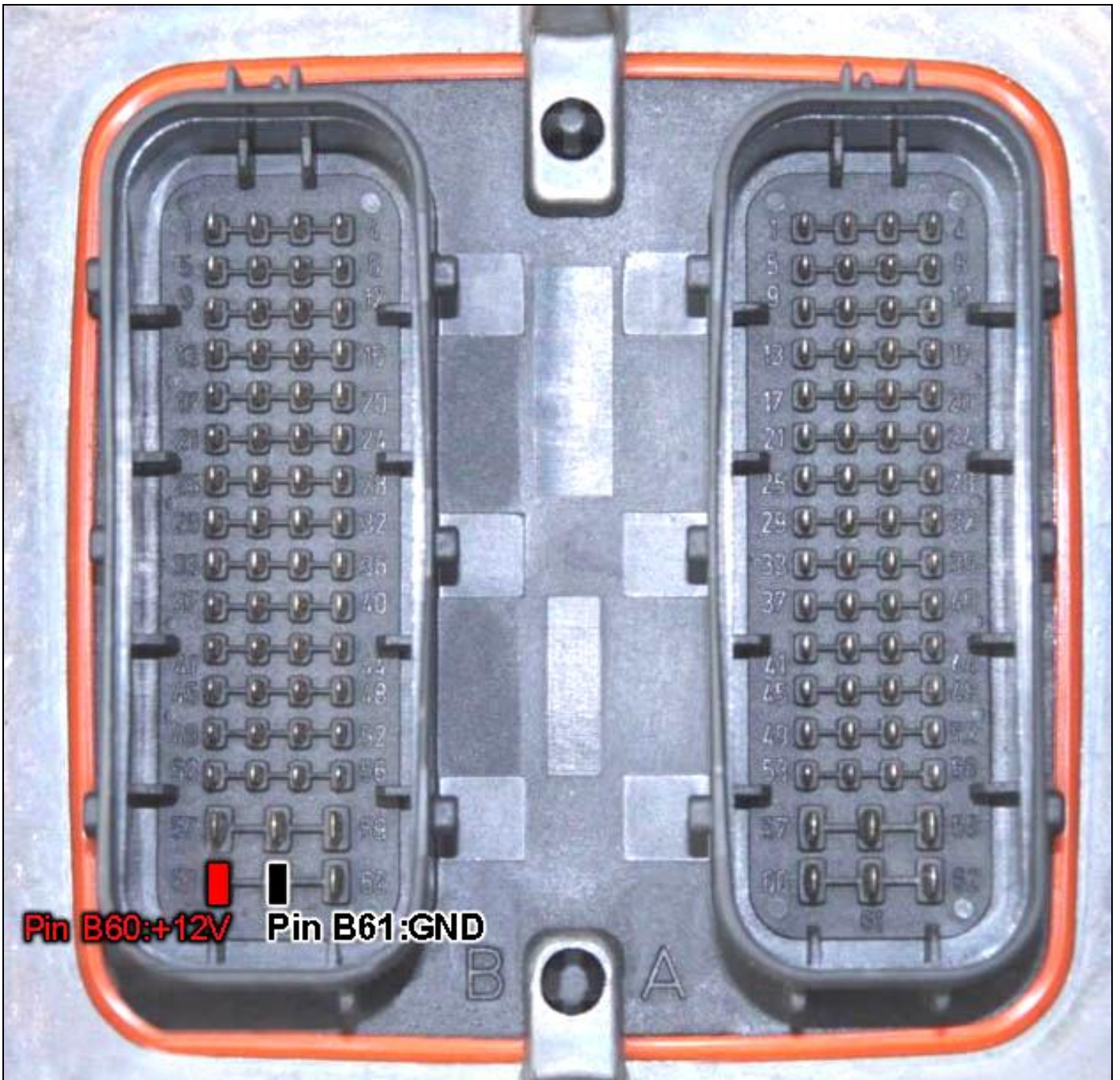
Tenere ben fermi i connettori per poter far leva e rimuovere il coperchio della centralina. Si consiglia di utilizzare una pressa da officina come indicato in figura:

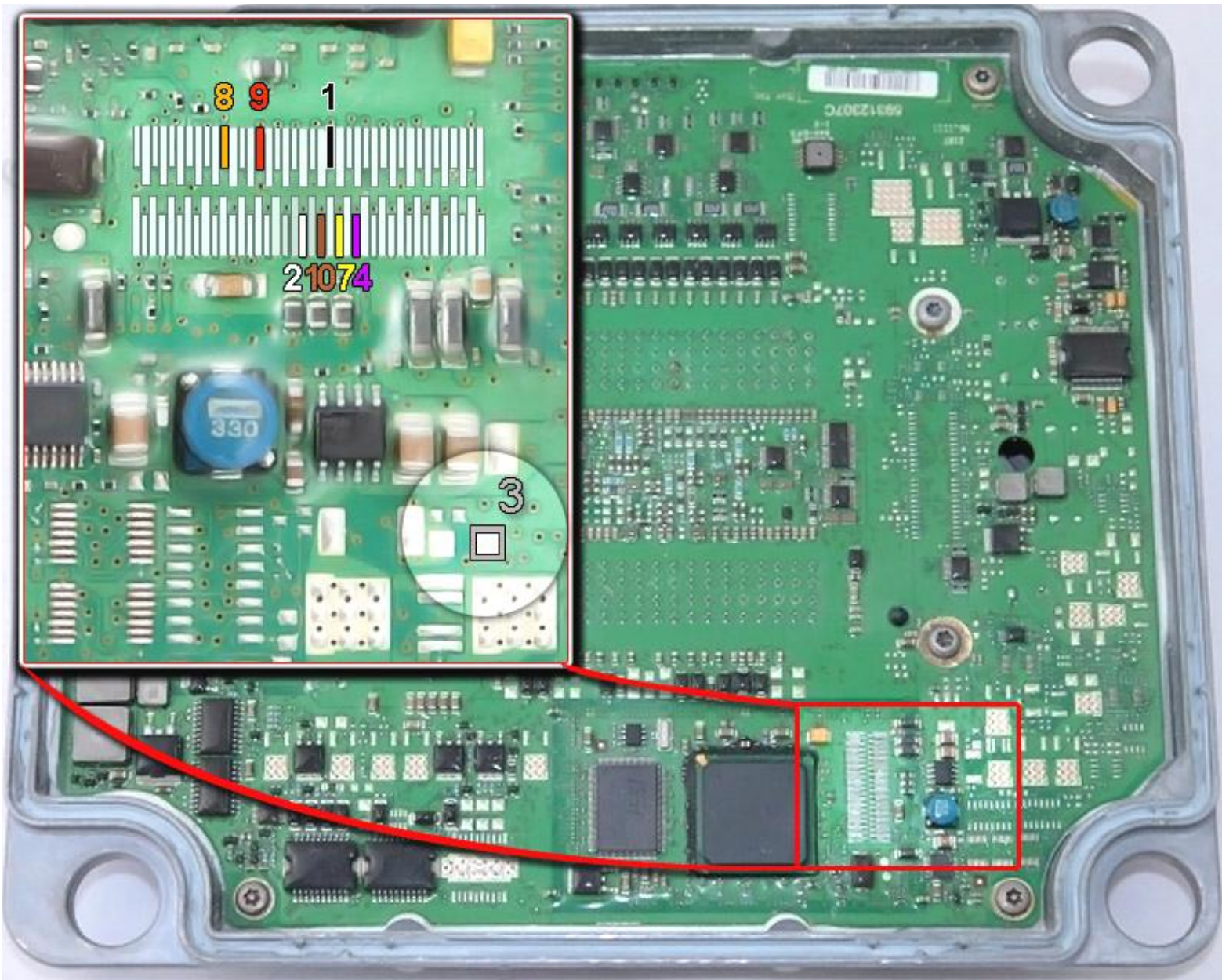
*Keeping the grip to leverage the connectors and remove the cover of the ECU. We recommend using a workshop press as shown in figure:*



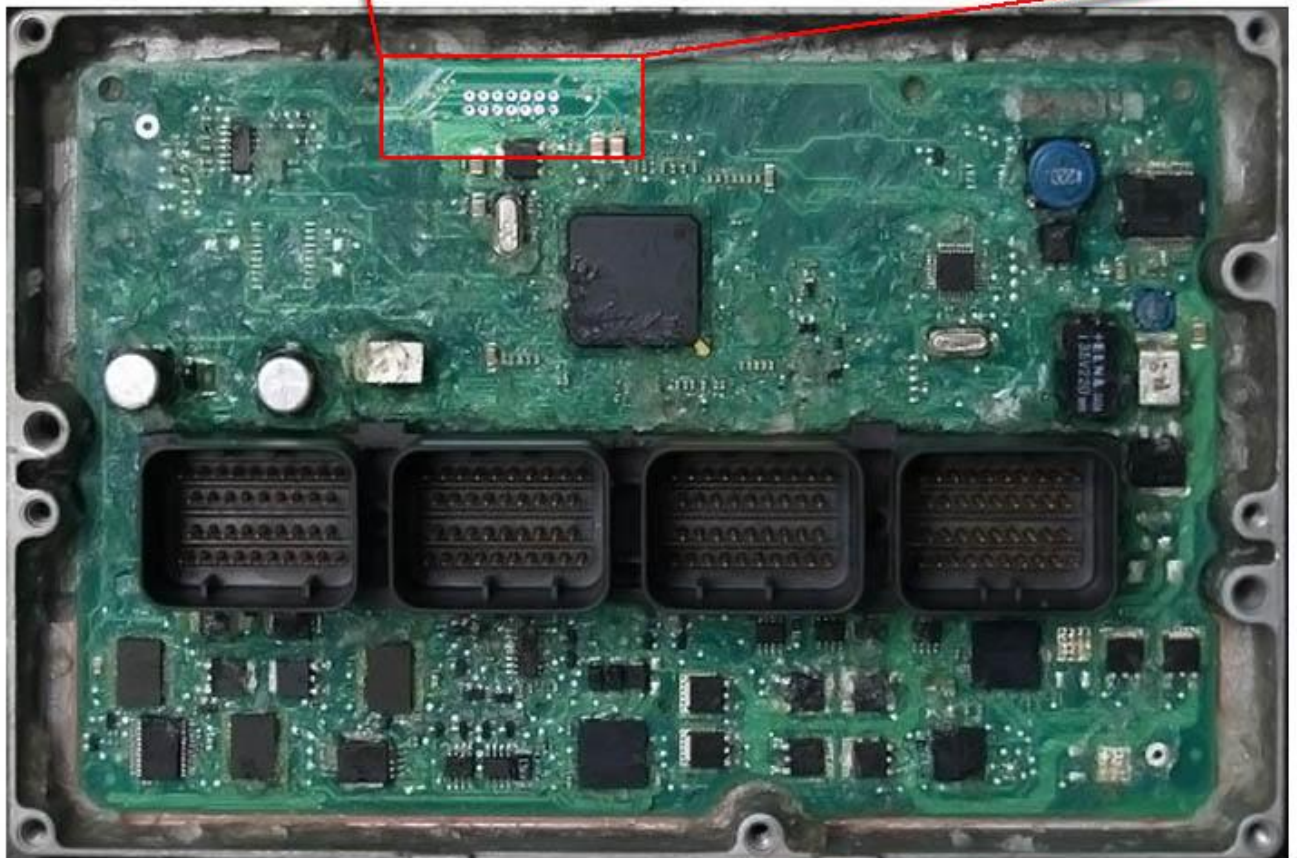




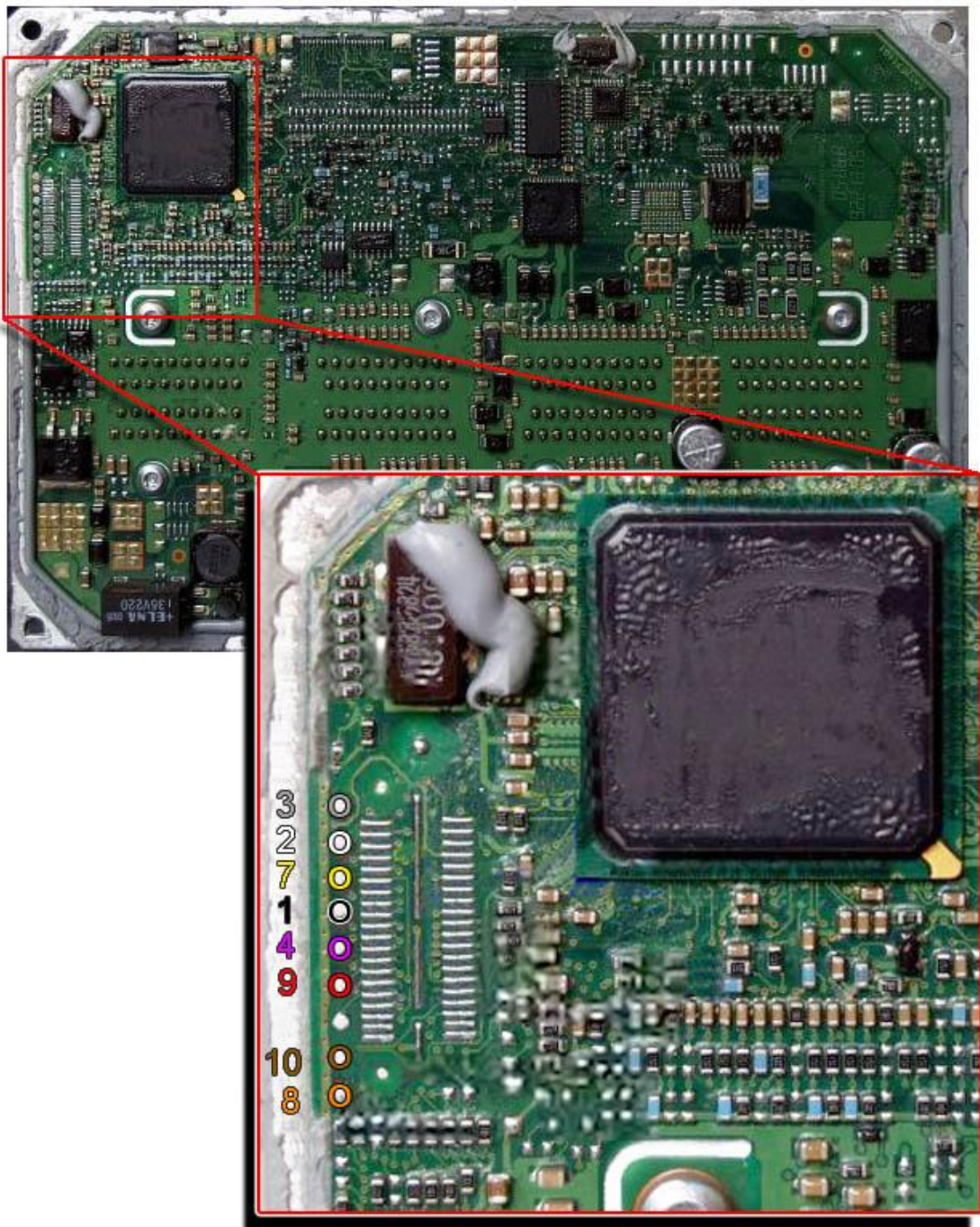




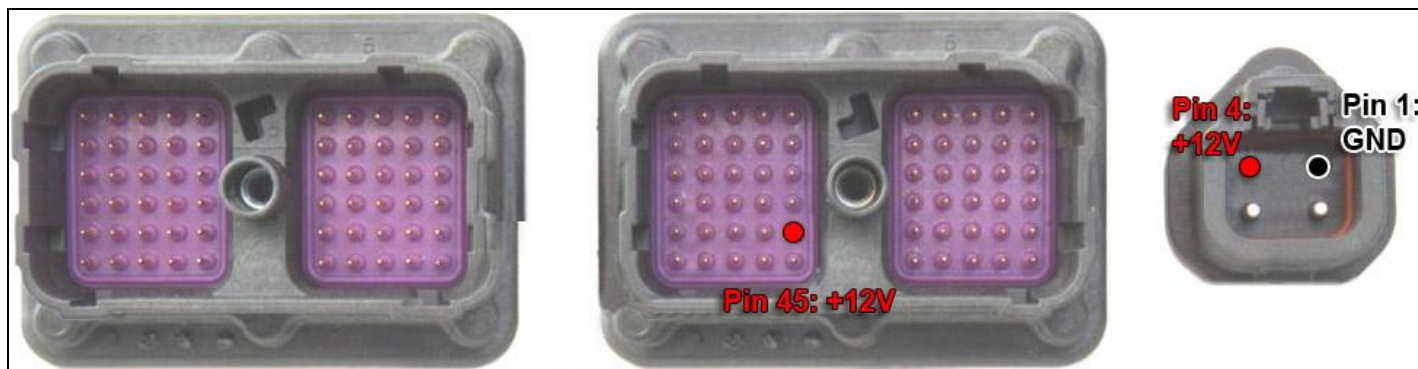
Motorola NCG4 Chrysler - Dodge - Jeep



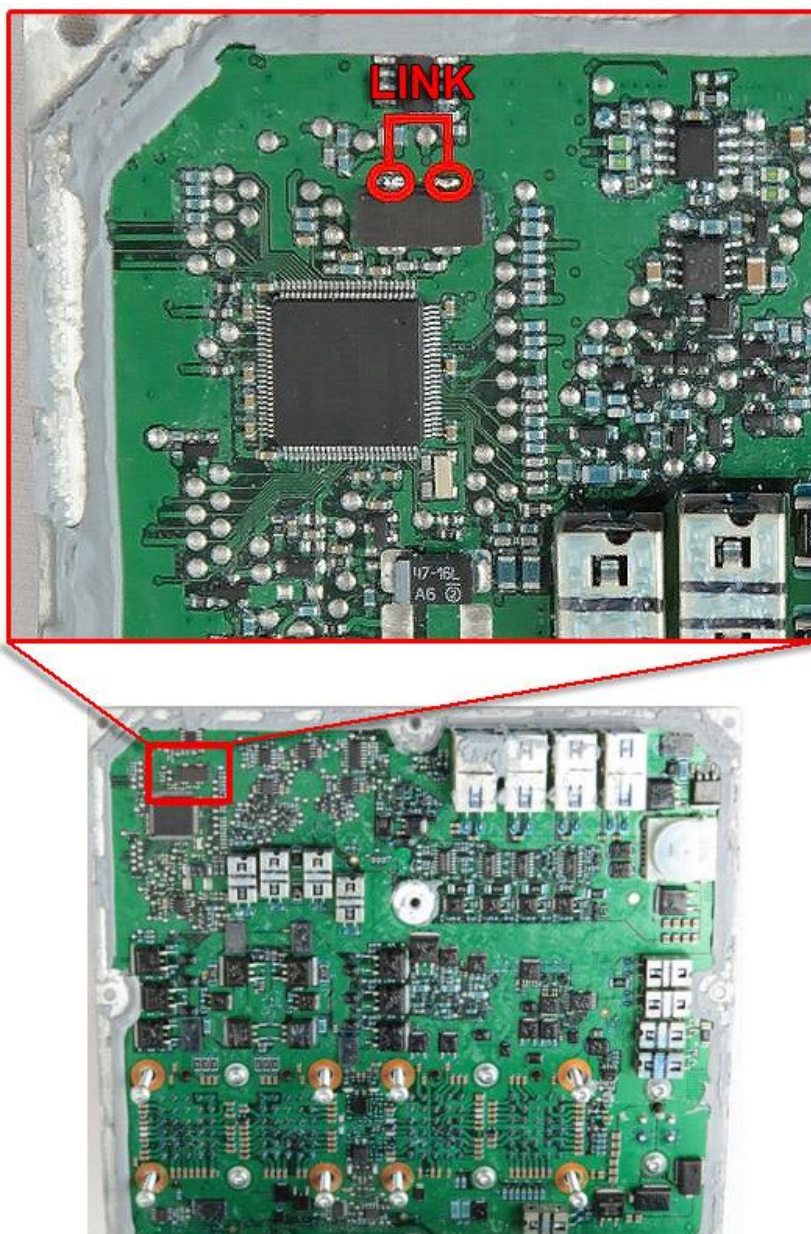
Motorola NCG5 Chrysler - Dodge - Jeep



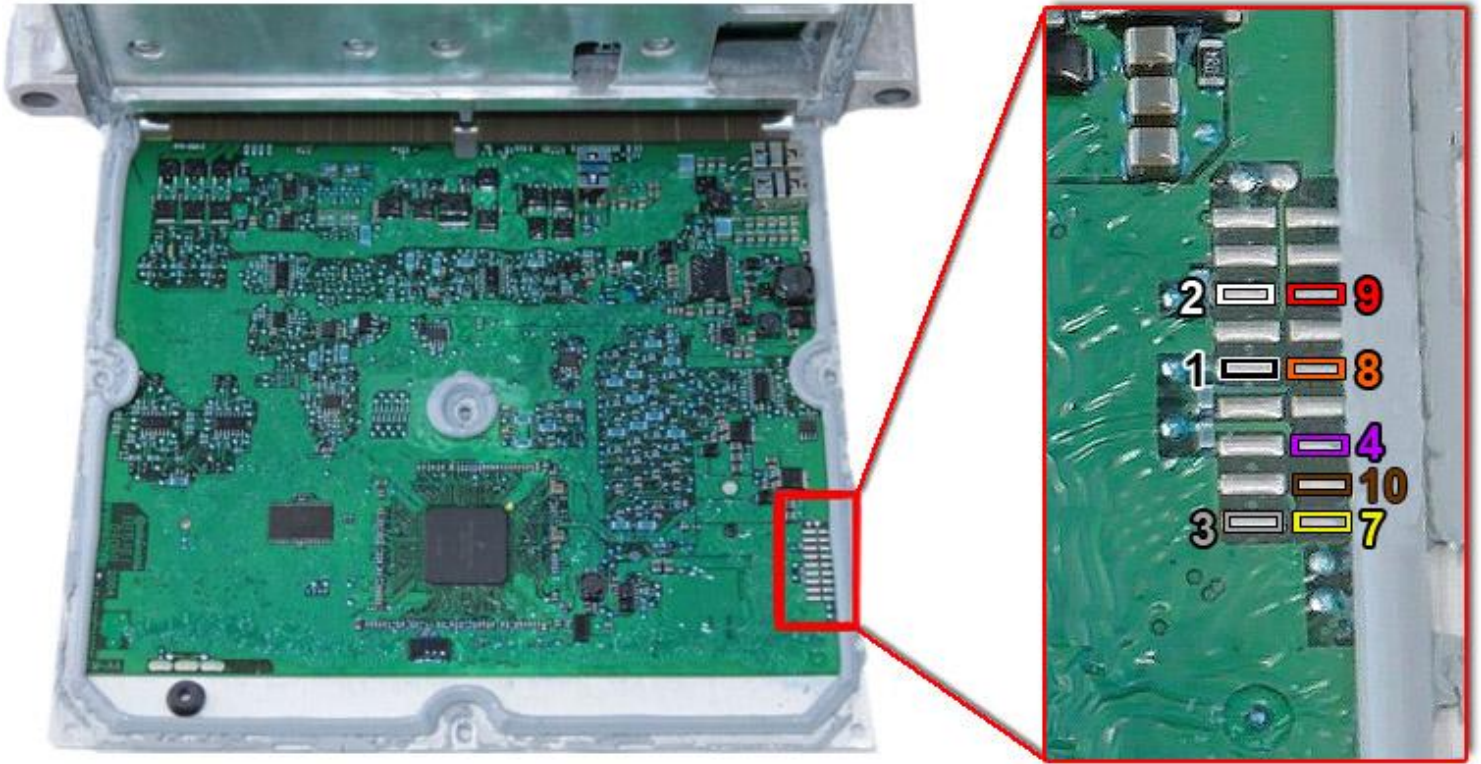
Continental CM2150E DAF Truck - KING LONG



1/2: Creare un link nella parte inferiore / Do a link in backside:



2/2: Connettere il cavo flat colorato / Connect the color flat cable:



**Manuale JTAG MPC55xx**

**Versione**

Marzo 2013

*Version*

*March 2013*

